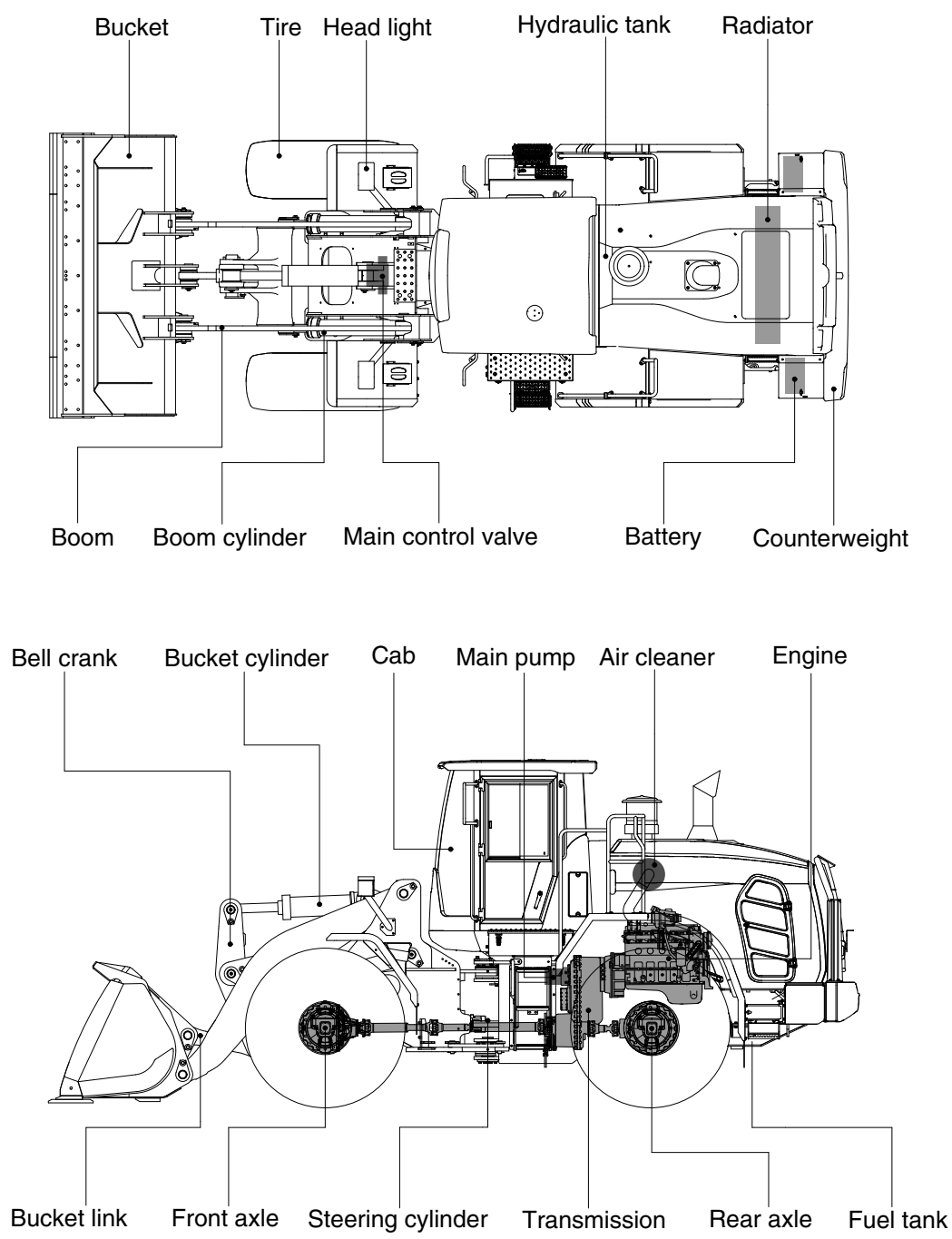


2. SPECIFICATIONS

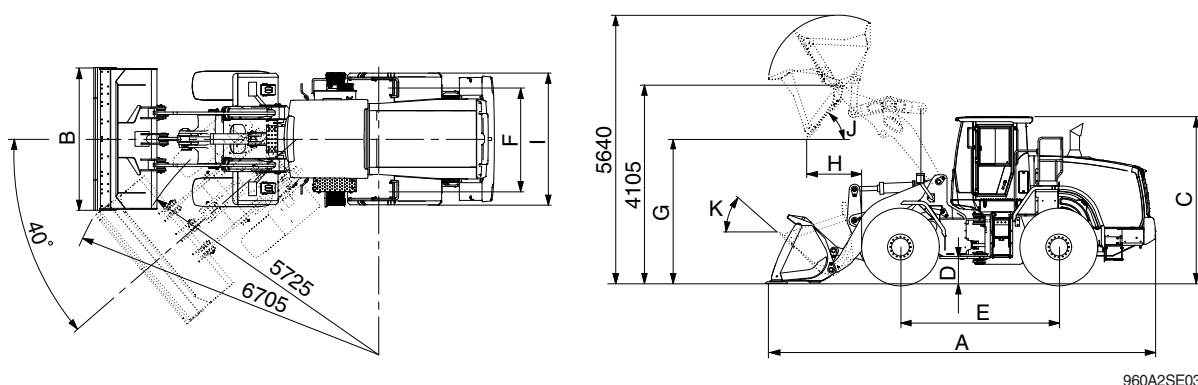
1. MAJOR COMPONENTS



960SA2SE01

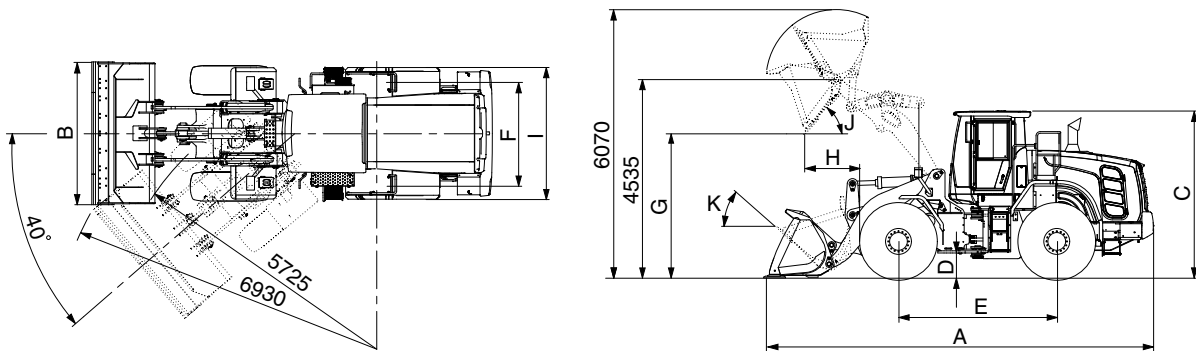
2. SPECIFICATIONS

1) WITH BOLT-ON CUTTING EDGE TYPE BUCKET (HL960 T3)



Description			Unit	Specification
Operating weight			kg (lb)	18900 (41670)
Bucket capacity	Struck		m³ (yd³)	2.9 (3.8)
	Heaped			3.3 (4.3)
Overall length	A		mm (ft-in)	8140 (26' 8")
Overall width	B			2900 (9' 6")
Overall height	C			3450 (11' 4")
Ground clearance	D			410 (1' 4")
Wheelbase	E			3300 (10' 10")
Tread	F			2160 (7' 1")
Dump clearance at 45°	G			2935 (9' 8")
Dump reach (full lift)	H			1285 (4' 2")
Width over tires	I			2770 (9' 1")
Dump angle	J			degree (°)
Rollback angle (carry position)	K		47	
Cycle time	Lift (with load)		sec	5.8
	Dump (with load)			2.0
	Lower (empty)			3.7
Maximum travel speed			km/hr (mph)	37.9 (23.5)
Minimum turning radius (center of outside tire)				5.72 (18' 9")
Gradeability			degree (°)	30
Breakout force			kg (lb)	16670 (36750)
Travel speed	Forward	First gear	km/hr (mph)	6.2 (3.9)
		Second gear		11.7 (7.3)
		Third gear		23.5 (14.6)
		Fourth gear		37.9 (23.5)
	Reverse	First gear		6.5 (4.0)
		Second gear		12.3 (7.6)
		Third gear		24.8 (15.4)

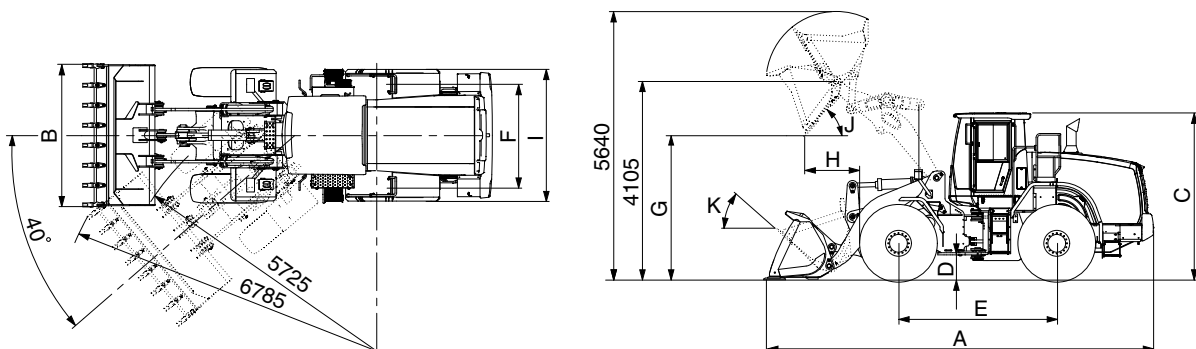
WITH BOLT-ON CUTTING EDGE TYPE BUCKET (HL960XT T3)



960A2SE03-1

Description			Unit	Specification
Operating weight			kg (lb)	19730 (43500)
Bucket capacity	Struck		m³ (yd³)	2.9 (3.8)
	Heaped			3.3 (4.3)
Overall length	A		mm (ft-in)	8695 (28' 6")
Overall width	B			2900 (9' 6")
Overall height	C			3450 (11' 4")
Ground clearance	D			410 (1' 4")
Wheelbase	E			3300 (10' 10")
Tread	F			2160 (7' 1")
Dump clearance at 45°	G			3365 (11' 0")
Dump reach (full lift)	H			1380 (4' 6")
Width over tires	I			2770 (9' 1")
Dump angle	J		degree (°)	50
Rollback angle (carry position)	K			47
Cycle time	Lift (with load)		sec	5.8
	Dump (with load)			2.0
	Lower (empty)			3.7
Maximum travel speed			km/hr (mph)	37.9 (23.5)
Minimum turning radius (center of outside tire)				5.72 (18' 9")
Gradeability			degree (°)	30
Breakout force			kg (lb)	16430 (36220)
Travel speed	Forward	First gear	km/hr (mph)	6.2 (3.9)
		Second gear		11.7 (7.3)
		Third gear		23.5 (14.6)
		Fourth gear		37.9 (23.5)
	Reverse	First gear		6.5 (4.0)
		Second gear		12.3 (7.6)
		Third gear		24.8 (15.4)

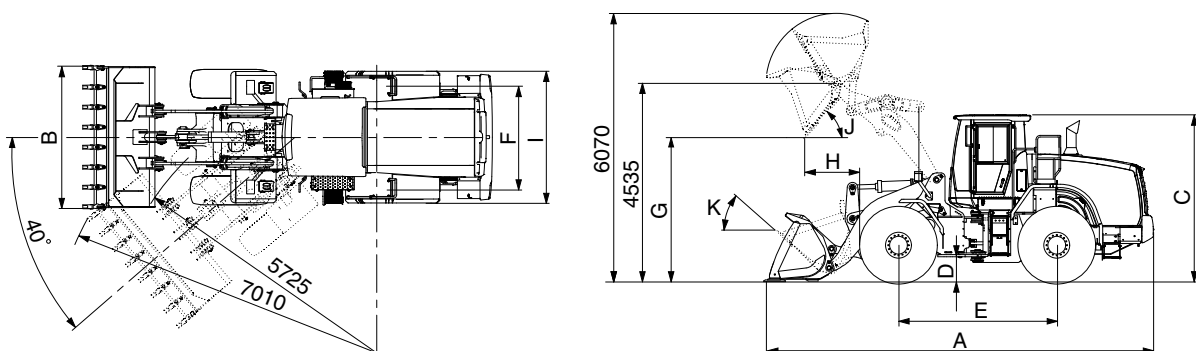
2) WITH TOOTH TYPE BUCKET (HL960 T3)



960A2SE02

Description			Unit	Specification
Operating weight			kg (lb)	18825 (41505)
Bucket capacity	Struck		m³ (yd³)	2.8 (3.6)
	Heaped			3.2 (4.2)
Overall length	A		mm (ft-in)	8290 (27' 2")
Overall width	B			2950 (9' 8")
Overall height	C			3450 (11' 4")
Ground clearance	D			410 (1' 4")
Wheelbase	E			3300 (10' 10")
Tread	F			2160 (7' 1")
Dump clearance at 45°	G			2810 (9' 3")
Dump reach (full lift)	H			1370 (4' 6")
Width over tires	I			2770 (9' 1")
Dump angle	J			degree (°)
Rollback angle (carry position)	K		47	
Cycle time	Lift (with load)		sec	5.8
	Dump (with load)			2.0
	Lower (empty)			3.7
Maximum travel speed			km/hr (mph)	37.9 (23.5)
Minimum turning radius (center of outside tire)				5.72 (18' 9")
Gradeability			degree (°)	30
Breakout force			kg (lb)	17705 (39030)
Travel speed	Forward	First gear	km/hr (mph)	6.2 (3.9)
		Second gear		11.7 (7.3)
		Third gear		23.5 (14.6)
		Fourth gear		37.9 (23.5)
	Reverse	First gear		6.5 (4.0)
		Second gear		12.3 (7.6)
		Third gear		24.8 (15.4)

WITH TOOTH TYPE BUCKET (HL960XT T3)



960A2SE02-1

Description			Unit	Specification
Operating weight			kg (lb)	19655 (43330)
Bucket capacity	Struck		m³ (yd³)	2.8 (3.6)
	Heaped			3.2 (4.2)
Overall length	A		mm (ft-in)	8845 (29' 0")
Overall width	B			2950 (9' 8")
Overall height	C			3450 (11' 4")
Ground clearance	D			410 (1' 4")
Wheelbase	E			3300 (10' 10")
Tread	F			2160 (7' 1")
Dump clearance at 45°	G			3240 (10' 8")
Dump reach (full lift)	H			1465 (4' 9")
Width over tires	I			2770 (9' 1")
Dump angle	J		degree (°)	50
Rollback angle (carry position)	K			47
Cycle time	Lift (with load)		sec	5.8
	Dump (with load)			2.0
	Lower (empty)			3.7
Maximum travel speed			km/hr (mph)	37.9 (23.5)
Minimum turning radius (center of outside tire)				5.72 (18' 9")
Gradeability			degree (°)	30
Breakout force			kg (lb)	17465 (38500)
Travel speed	Forward	First gear	km/hr (mph)	6.2 (3.9)
		Second gear		11.7 (7.3)
		Third gear		23.5 (14.6)
		Fourth gear		37.9 (23.5)
	Reverse	First gear		6.5 (4.0)
		Second gear		12.3 (7.6)
		Third gear		24.8 (15.4)

3. WEIGHT

Item		kg	lb
Front frame assembly		1608	3550
Rear frame assembly		1928	4255
Front fender (LH & RH)		31	70
Rear fender (LH & RH)		53	120
Counterweight	HL960 T3	870	1920
	HL960XT T3	1500	3310
Cab assembly		818	1805
Engine assembly		552	1220
Transmission assembly (4-speed)		505	1115
Driveshaft (front)		28	65
Driveshaft (center)		22	50
Driveshaft (rear)		12	30
Front axle (include differential)		1020	2250
Rear axle (include differential)		1090	2405
Tire (23.5 R25, ★ ★, L3), 1EA		1076	2375
Hydraulic tank assembly		182	405
Fuel tank assembly		331	729
Main pump assembly		22	50
Steering pump assembly		35	80
Main control valve	2-spool/3-spool	90/104	200/230
Steering valve (priority valve)		6	15
Boom assembly	HL960 T3	1250	2760
	HL960XT T3	1420	3135
Bell crank assembly		360	795
Bucket link		65	145
3.3 m³ bucket, with bolt on cutting edge		1825	4025
3.3 m³ bucket, with bolt on cutting edge for Quick coupler		1740	3840
3.2 m³ bucket, with 1-piece tooth		1750	3860
3.2 m³ bucket, with 2-piece tooth		1750	3860
3.3 m³ bucket, with 1-piece tooth and segment		1900	4190
Boom cylinder assembly (LH & RH)		148	330
Bucket cylinder assembly	HL960 T3	175	390
	HL960XT T3	190	420
Steering cylinder assembly (LH & RH)		30	70
Seat (including suspension and armrest)		72	160
Battery (1EA)		40	90
Under guard kit		52	115
Engine hood assembly		360	795
Mud guard assembly (LH & RH)		52	115

4. SPECIFICATION FOR MAJOR COMPONENTS

1) ENGINE

Item	Specification
Model	HYUNDAI HE6.7
Type	4-cycle turbocharged, charge air cooled diesel engine
Control type	Electronic control
Cooling method	Water cooling
Number of cylinders and arrangement	6 cylinders, in-line
Firing order	1-5-3-6-2-4
Combustion chamber type	Direct injection type
Cylinder bore × stroke	107 × 124 mm (4.2" × 4.9")
Piston displacement	6700 cc (408 cu in)
Compression ratio	17.2 : 1
Gross power	215 hp (160 kW) at 2100 rpm
Net power	210 hp (157 kW) at 2100 rpm
Maximum power	217 hp (162 kW) at 1900 rpm
Peak gross torque	949 N · m (700 lbf · ft) at 1400 rpm
Engine oil quantity	18 ℓ (4.8 U.S. gal)
Wet weight	552 kg (1216 lb)
Starting motor	24V-4.8kW
Alternator	24V-70Amp
Battery	2 × 12V × 150Ah

2) MAIN PUMP

Item	Specification
Type	Load sensing hydraulic system
Pump	Variable displacement piston pump
Rated oil quantity	245 ℓ /min (64.7 U.S.gpm)
System pressure	280 bar (4061 psi)

3) STEERING PUMP

Item	Specification
Type	Variable displacement piston pump
Rated oil quantity	159 ℓ /min (42 U.S.gpm)
System pressure	210 bar (3046 psi)

4) MAIN CONTROL VALVE

Item	Specification
Type	2 spool (bucket, boom), 3 spool (bucket, boom, aux)
Operating method	Hydraulic pilot assist
System pressure	280 kgf/cm ² (3980 psi)
Overload relief valve pressure	340 kgf/cm ² (4840 psi)

5) REMOTE CONTROL VALVE (EH TYPE)

Item	Specification
Type	Fingertip
Axle	Single axle for boom, bucket, auxiliary
Operating voltage	4.5~5.5 V
Output signal	0.5~4.5 V (neutral 2.5 V)

6) CYLINDER

Item		Specification
Boom cylinder	Bore dia × Rod dia × Stroke	Ø140 × Ø80 × 765 mm
Bucket cylinder (HL960 T3)	Bore dia × Rod dia × Stroke	Ø160 × Ø85 × 530 mm
Bucket cylinder (HL960XT T3)	Bore dia × Rod dia × Stroke	Ø160 × Ø85 × 530 mm
Steering cylinder	Bore dia × Rod dia × Stroke	Ø 80 × Ø45 × 424 mm

9) DYNAMIC POWER TRANSMISSION DEVICES

Item			Specification
4-speed transmission	Model		ZF 4WG 210
	Type	Converter	Single-stage, single-phase
		Transmission	Full-automatic power shift
	Gear shift		Forward fourth gear, reverse third gear
	Control		Electrical single lever type, kick-down system
	Travel speed		Forward 1/2/3/4 : 6.2 / 11.7 / 23.5 / 37.9 km/hr Reverse 1/2/3 : 6.5/12.3/24.8 km/hr
Axle	Drive devices		4-wheel drive
	Front		Front fixed location
	Rear		Oscillation $\pm 12^\circ$ of center pin-loaded
Wheels	Tires		23.5 R25, ★★, L3
Brakes	Travel		Four-wheel, wet-disc type, full hydraulic
	Parking		Spring applied, hydraulic released brake on transmission
Steering	Type		Full hydraulic, articulated
	Steering angle		40° to both right and left angle, respectively